

Race	Candidate GOP/Dem/Ind	GOP Vote	Dem Vote	Ind Vote	Total Vote	GOP %	Dem %	Ind %	Rem %	Plurality/Win	%of Marg	GOP Index
<b>2000</b>												
Pres	BUSH+/Gore	1,437,490	1,217,290	0	2,736,640*	52.5	44.5	0.0	3.0	220,200 R	8.1	0.0
<b>1996</b>												
Pres	DOLE+/Clinton/Perot	1,138,350	1,091,060	159,861	2,416,642*	47.1	45.2	6.6	1.1	47,290 r	2.0	0.0
<b>1992</b>												
Pres	BUSH*/Clinton/Perot	1,150,517	1,038,650	348,639	2,558,665*	45.0	40.6	13.6	0.8	111,867 r	4.4	0.0
<b>1988</b>												
Pres	BUSH+/Dukakis	1,309,162	859,799	0	2,191,609*	59.7	39.2	0.0	1.0	449,363 R	20.5	0.0
<b>1984</b>												
Pres	REAGAN*/Mondale	1,337,078	796,250	0	2,146,635*	62.3	37.1	0.0	0.6	540,828 R	25.2	0.0
<b>1980</b>												
Pres	REAGAN+/Carter/Anderson	989,609	752,174	95,418	1,866,032*	53.0	40.3	5.1	1.6	237,435 R	12.7	0.0
<b>1976</b>												
Pres	FORD+/Carter	836,554	813,896	0	1,697,094*	49.3	48.0	0.0	2.8	22,658 r	1.3	0.0
<b>1972</b>												
Pres	NIXON*/McGovern	988,493	438,887	0	1,457,019*	67.8	30.1	0.0	2.0	549,606 R	37.7	0.0
<b>1968</b>												
Pres	NIXON/Humphrey+/Wallace	590,319	442,387	321,833	1,361,491*	43.4	32.5	23.6	0.5	147,932 r	10.9	0.0
<b>1964</b>												
Pres	Goldwater+/JOHNSON	481,334	558,038	0	1,042,267*	46.2	53.5	0.0	0.3	76,704 D	7.4	0.0
<b>1960</b>												
Pres	NIXON+/Kennedy	404,521	362,327	0	771,449*	52.4	47.0	0.0	0.6	42,194 R	5.5	0.0
<b>1956</b>												
Pres	EISENHOWER*/Stevenson/An	386,459	267,760	0	697,978*	55.4	38.4	0.0	6.3	118,699 R	17.0	0.0
<b>1952</b>												
Pres	EISENHOWER/Stevenson+	349,037	268,677	0	619,689*	56.3	43.4	0.0	0.3	80,360 R	13.0	0.0
<b>1948</b>												
Pres	Dewey/TRUMAN+	172,070	200,786	46,400	419,256	41.0	47.9	11.1	0.0	28,716 d	6.9	0.0
<b>1944</b>												
Pres	Dewey/ROOSEVELT*	145,243	242,276	0	388,485*	37.4	62.4	0.0	0.3	97,033 D	25.0	0.0
<b>1940</b>												
Pres	Willkie/ROOSEVELT*	109,363	235,961	0	346,608*	31.6	68.1	0.0	0.4	126,598 D	36.5	0.0
<b>1936</b>												
Pres	Landon/ROOSEVELT*	98,336	234,980	0	334,590*	29.4	70.2	0.0	0.4	136,644 D	40.8	0.0
<b>1932</b>												
Pres	Hoover*/ROOSEVELT	89,637	203,979	0	297,942*	30.1	68.5	0.0	1.5	114,342 D	38.4	0.0
<b>1928</b>												
Pres	HOOVER/Smith+	164,609	140,146	0	305,364*	53.9	45.9	0.0	0.2	24,463 R	8.0	0.0
<b>1924</b>												
Pres	Coolidge/DAVIS+	73,328	139,717	0	223,603*	32.8	62.5	0.0	4.7	66,389 D	29.7	0.0
<b>1920</b>												
Pres	Harding/COX+	87,456	141,670	0	231,000*	37.9	61.3	0.0	0.8	54,214 D	23.5	0.0

POLIDATA © Demographic and Political Guides. All Rights Reserved. Copyright © 2004. www.polidata.us

1. Statewide Winner in UPPERCASE. Incumbency: \* for incumbent, + for party holding seat.

2. BOLDING indicates unit won by REPUBLICANS. Plurality in UPPERCASE indicates unit won with a majority of the vote.

3. Total column may include votes for minor party candidates. An asterisk (\*) follows the Total column if it includes votes not listed (see Rem%).

4. % of Marg(in) is Plurality as % of Total Vote. GOP Index (R-Dex) is the percentage (not percentage points) by which GOP% for County is above(+)/below(-) the State GOP%.

5. Order of races is standardized and may not match ballot order. Selected races only; non-competitive lower-ticket races may be omitted.

6. Each race is assigned a specific bar in the graphs. Top of the ticket is darkest bar and is at the left of each year cluster. Races not listed in the history table will result in blank bars.

Figure 1. TOTAL VOTES.

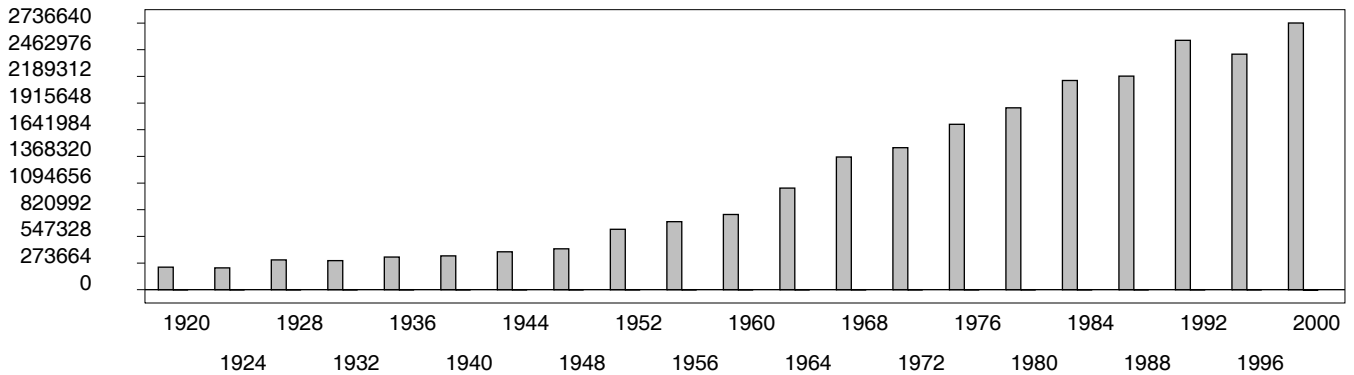


Figure 2. REPUBLICAN %. Refer to GOP-DEX for comparative value.

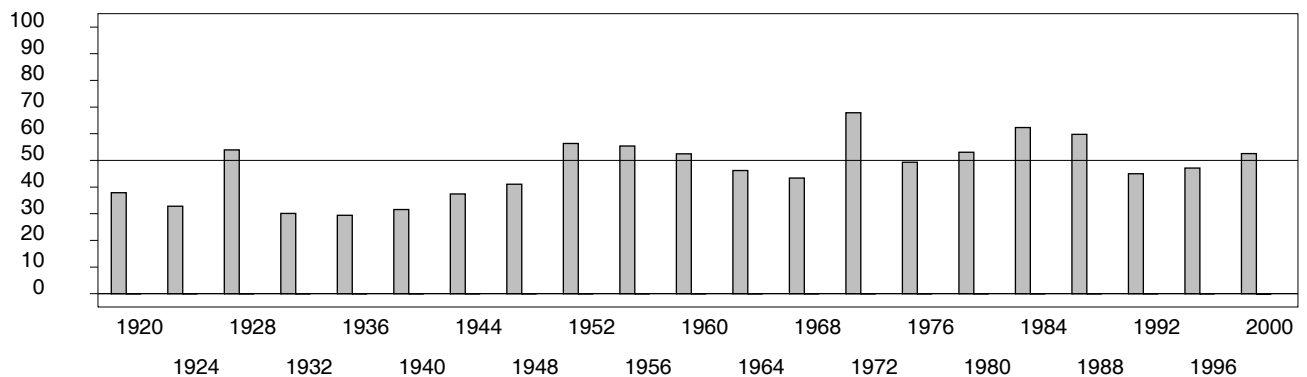


Figure 3. R-DEX: % by which County GOP% is above/below the State GOP%.



1. Statewide Winner in UPPERCASE. Incumbency: \* for incumbent, + for party holding seat.
2. BOLDING indicates unit won by REPUBLICANS. Plurality in UPPERCASE indicates unit won with a majority of the vote.
3. Total column may include votes for minor party candidates. An asterisk (\*) follows the Total column if it includes votes not listed (see Rem%).
4. % of Marg(in) is Plurality as % of Total Vote. GOP Index (R-Dex) is the percentage (not percentage points) by which GOP% for County is above(+)/below(-) the State GOP%.
5. Order of races is standardized and may not match ballot order. Selected races only; non-competitive lower-ticket races may be omitted.
6. Each race is assigned a specific bar in the graphs. Top of the ticket is darkest bar and is at the left of each year cluster. Races not listed in the history table will result in blank bars.

[51000VHB-psvhy21-CK25]