

Race	Candidate GOP/Dem/Ind	GOP Vote	Dem Vote	Ind Vote	Total Vote	GOP %	Dem %	Ind %	Rem %	Plurality/Win	%of Marg	GOP Index
2001												
Gov	Earley+/WARNER	887,202	983,889	0	1,885,668*	47.1	52.2	0.0	0.8	96,687 D	5.1	0.0
LtG	Katzen+/KAINÉ	883,852	926,377	0	1,838,997*	48.1	50.4	0.0	1.6	42,525 D	2.3	0.0
AtG	KILGORE+/McEachin	1,106,955	736,337	0	1,843,292	60.1	40.0	0.0	0.0	370,618 R	20.1	0.0
2000												
Pres	BUSH+/Gore	1,437,490	1,217,290	0	2,736,640*	52.5	44.5	0.0	3.0	220,200 R	8.1	0.0
Sen	ALLEN/Robb*	1,420,460	1,296,093	0	2,716,553	52.3	47.7	0.0	0.0	124,367 R	4.6	0.0
1997												
Gov	GILMORE+/Beyer	969,062	738,971	0	1,733,988*	55.9	42.6	0.0	1.5	230,091 R	13.3	0.0
LtG	HAGER/Payne+	839,895	754,404	0	1,669,323*	50.3	45.2	0.0	4.5	85,491 R	5.1	0.0
AtG	EARLEY+/Dolan	953,455	702,523	0	1,655,978	57.6	42.4	0.0	0.0	250,932 R	15.2	0.0
1996												
Pres	DOLE+/Clinton/Perot	1,138,350	1,091,060	159,861	2,416,642*	47.1	45.2	6.6	1.1	47,290 r	2.0	0.0
Sen	WARNER*/Warner	1,235,744	1,115,982	0	2,351,726	52.6	47.5	0.0	0.0	119,762 R	5.1	0.0
1994												
Sen	North/ROBB+/Coleman	882,213	938,376	235,324	2,055,913	42.9	45.6	11.5	0.0	56,163 d	2.7	0.0
1993												
Gov	ALLEN/Terry+	1,045,319	733,527	0	1,793,244*	58.3	40.9	0.0	0.8	311,792 R	17.4	0.0
LtG	Farris/BEYER*	791,593	947,837	0	1,739,430	45.5	54.5	0.0	0.0	156,244 D	9.0	0.0
AtG	GILMORE/Dolan+	958,982	749,565	0	1,708,547	56.1	43.9	0.0	0.0	209,417 R	12.3	0.0
1992												
Pres	BUSH*/Clinton/Perot	1,150,517	1,038,650	348,639	2,558,665*	45.0	40.6	13.6	0.8	111,867 r	4.4	0.0
1989												
Gov	Coleman/WILDER+	890,195	896,936	0	1,787,131	49.8	50.2	0.0	0.0	6,741 D	0.4	0.0
LtG	Dalton/BEYER+	791,360	934,377	0	1,725,737	45.9	54.1	0.0	0.0	143,017 D	8.3	0.0
AtG	Benedetti/TERRY*	638,124	1,096,095	0	1,734,219	36.8	63.2	0.0	0.0	457,971 D	26.4	0.0
1988												
Pres	BUSH+/Dukakis	1,309,162	859,799	0	2,191,609*	59.7	39.2	0.0	1.0	449,363 R	20.5	0.0
1985												
Gov	Durette/BALILES+	601,652	741,438	0	1,343,090	44.8	55.2	0.0	0.0	139,786 D	10.4	0.0
LtG	Chichester/WILDER+	636,695	685,329	0	1,322,024	48.2	51.8	0.0	0.0	48,634 D	3.7	0.0
AtG	O' Brien/TERRY+	512,269	814,808	0	1,327,077	38.6	61.4	0.0	0.0	302,539 D	22.8	0.0
1984												
Pres	REAGAN*/Mondale	1,337,078	796,250	0	2,146,635*	62.3	37.1	0.0	0.6	540,828 R	25.2	0.0
1982												
Sen	TRIBLE/Davis+	724,571	690,839	0	1,415,410	51.2	48.8	0.0	0.0	33,732 R	2.4	0.0
1981												
Gov	Coleman+/ROBB	659,398	760,357	0	1,420,611*	46.4	53.5	0.0	0.0	100,959 D	7.1	0.0
LtG	Miller/DAVIS+	602,714	750,743	0	1,354,078*	44.5	55.4	0.0	0.0	148,029 D	10.9	0.0
AtG	Durette+/BALILES	656,284	682,410	0	1,339,214*	49.0	51.0	0.0	0.0	26,126 D	2.0	0.0

POLIDATA © Demographic and Political Guides. All Rights Reserved. Copyright © 2004. www.polidata.us

1. Statewide Winner in UPPERCASE. Incumbency: * for incumbent, + for party holding seat.

2. BOLDING indicates unit won by REPUBLICANS. Plurality in UPPERCASE indicates unit won with a majority of the vote.

3. Total column may include votes for minor party candidates. An asterisk (*) follows the Total column if it includes votes not listed (see Rem%).

4. % of Marg(in) is Plurality as % of Total Vote. GOP Index (R-Dex) is the percentage (not percentage points) by which GOP% for County is above(+)/below(-) the State GOP%.

5. Order of races is standardized and may not match ballot order. Selected races only; non-competitive lower-ticket races may be omitted.

6. Each race is assigned a specific bar in the graphs. Top of the ticket is darkest bar and is at the left of each year cluster. Races not listed in the history table will result in blank bars.

Figure 1. TOTAL VOTES.

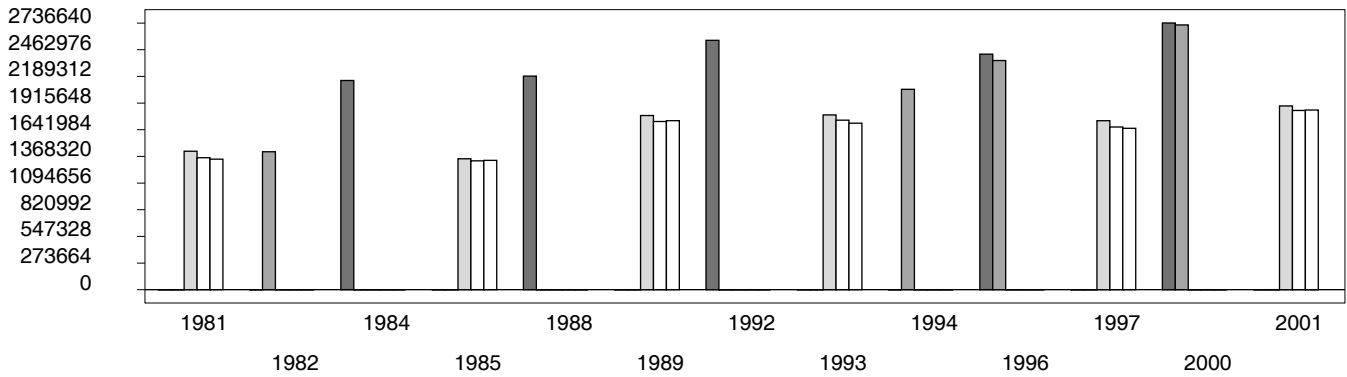


Figure 2. REPUBLICAN %. Refer to GOP-DEX for comparative value.

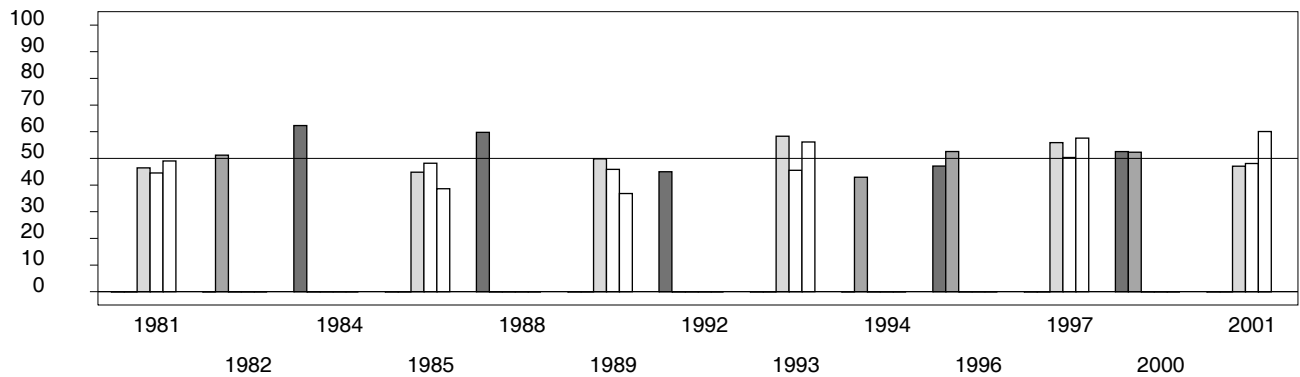


Figure 3. R-DEX: % by which County GOP% is above/below the State GOP%.

