

Race	Candidate GOP/Dem/Ind	GOP Vote	Dem Vote	Ind Vote	Total Vote	GOP %	Dem %	Ind %	Rem %	Plurality/Win	%of Marg	GOP Index
2008												
Pres	McCain/OBAMA+	98,974	219,262	0	325,046*	30.5	67.5	0.0	2.1	120,288 D	37.0	0.0
2004												
Pres	Bush/KERRY+	121,180	184,067	0	312,309*	38.8	58.9	0.0	2.3	62,887 D	20.1	0.0
2000												
Pres	Bush/GORE+/Nader	119,775	149,022	0	294,308*	40.7	50.6	0.0	8.7	29,247 D	9.9	0.0
1996												
Pres	Dole/CLINTON*/Perot	80,352	137,894	31,024	258,449*	31.1	53.4	12.0	3.6	57,542 D	22.3	0.0
1992												
Pres	Bush*/CLINTON/Perot	88,122	133,592	65,991	289,701*	30.4	46.1	22.8	0.7	45,470 d	15.7	0.0
1988												
Pres	BUSH+/Dukakis	124,331	115,775	0	243,327*	51.1	47.6	0.0	1.3	8,556 R	3.5	0.0
1984												
Pres	REAGAN*/Mondale	135,865	95,730	0	234,561*	57.9	40.8	0.0	1.3	40,135 R	17.1	0.0
1980												
Pres	REAGAN+/Carter/Anderson	94,628	81,952	31,761	213,299*	44.4	38.4	14.9	2.3	12,676 r	5.9	0.0
1976												
Pres	FORD+/Carter	102,085	80,954	0	187,666*	54.4	43.1	0.0	2.5	21,131 R	11.3	0.0
1972												
Pres	NIXON*/McGovern	117,149	68,174	0	186,947*	62.7	36.5	0.0	0.9	48,975 R	26.2	0.0
1968												
Pres	NIXON/Humphrey+/Wallace	85,142	70,255	5,104	161,404*	52.8	43.5	3.2	0.6	14,887 R	9.2	0.0
1964												
Pres	Goldwater+/JOHNSON	54,942	108,127	0	163,089*	33.7	66.3	0.0	0.0	53,185 D	32.6	0.0
1960												
Pres	NIXON+/Kennedy	98,131	69,186	0	167,324*	58.7	41.4	0.0	0.0	28,945 R	17.3	0.0
1956												
Pres	EISENHOWER*/Stevenson	110,390	42,549	0	152,978*	72.2	27.8	0.0	0.0	67,841 R	44.4	0.0
1952												
Pres	EISENHOWER+/Stevenson	109,717	43,355	0	153,557*	71.5	28.2	0.0	0.3	66,362 R	43.2	0.0
1948												
Pres	DEWEY*/Truman	75,926	45,557	0	123,382*	61.5	36.9	0.0	1.5	30,369 R	24.6	0.0
1944												
Pres	DEWEY+/Roosevelt	71,527	53,820	0	125,361*	57.1	42.9	0.0	0.0	17,707 R	14.1	0.0
1940												
Pres	WILLKIE+/Roosevelt	78,371	64,269	0	143,062*	54.8	44.9	0.0	0.3	14,102 R	9.9	0.0
1936												
Pres	LANDON+/Roosevelt	81,023	62,124	0	143,689*	56.4	43.2	0.0	0.4	18,899 R	13.2	0.0
1932												
Pres	HOOVER*/Roosevelt	78,984	56,266	0	136,980*	57.7	41.1	0.0	1.3	22,718 R	16.6	0.0
1928												
Pres	HOOVER+/Smith	90,404	44,440	0	135,191*	66.9	32.9	0.0	0.3	45,964 R	34.0	0.0
1924												
Pres	COOLIDGE+/Davis/LaFollet	80,498	16,124	6,295	102,917	78.2	15.7	6.1	0.0	64,374 R	62.6	0.0
1920												
Pres	HARDING+/Cox	68,212	20,919	0	89,961*	75.8	23.3	0.0	0.9	47,293 R	52.6	0.0

POLIDATA © Demographic and Political Guides. All Rights Reserved. Copyright © 2011. www.polidata.us

1. Statewide Winner in UPPERCASE. Incumbency: * for incumbent, + for party holding seat.

2. BOLDING indicates unit won by REPUBLICANS. Plurality in UPPERCASE indicates unit won with a majority of the vote.

3. Total column may include votes for minor party candidates. An asterisk (*) follows the Total column if it includes votes not listed (see Rem%).

4. % of Marg(in) is Plurality as % of Total Vote. GOP Index (R-Dex) is the percentage (not percentage points) by which GOP% for County is above(+)/below(-) the State GOP%.

5. Order of races is standardized and may not match ballot order. Selected races only; non-competitive lower-ticket races may be omitted.

6. Each race is assigned a specific bar in the graphs. Top of the ticket is darkest bar and is at the left of each year cluster. Races not listed in the history table will result in blank bars.

Figure 1. TOTAL VOTES.

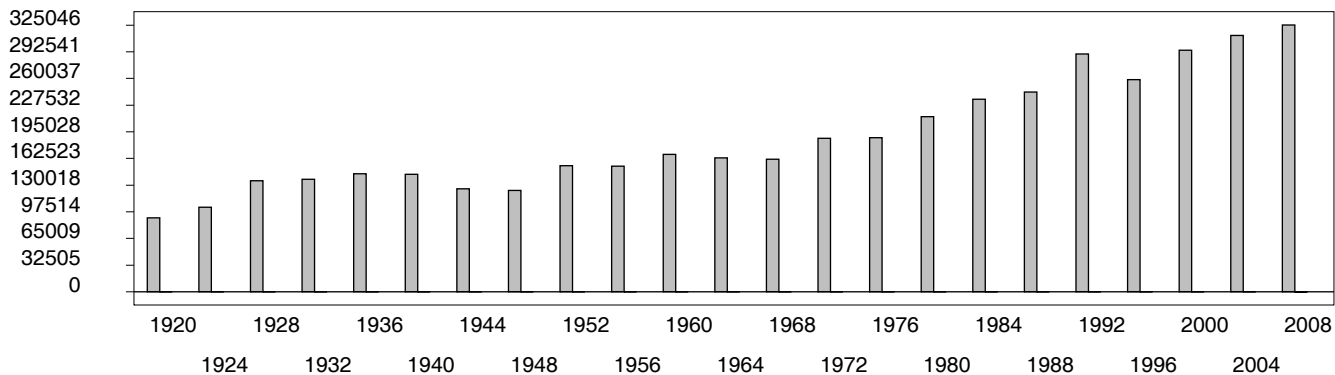


Figure 2. REPUBLICAN %. Refer to GOP-DEX for comparative value.

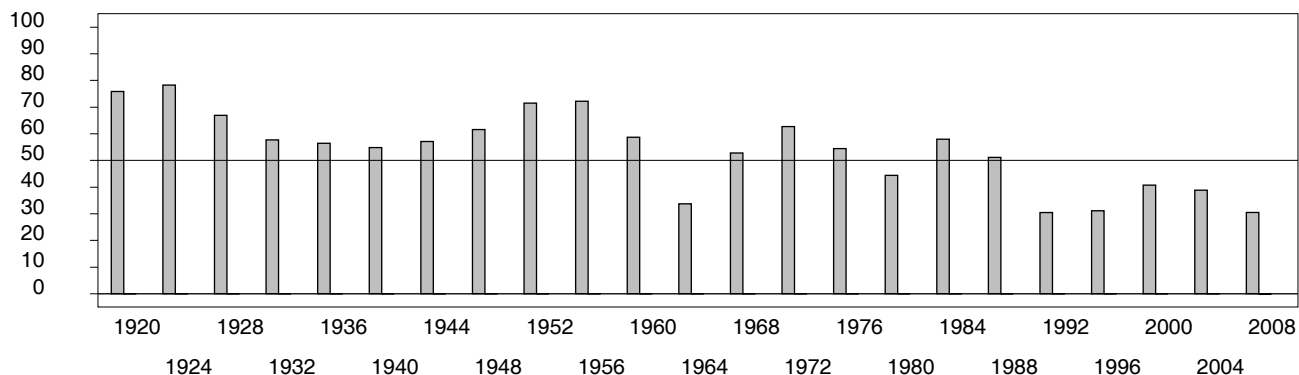
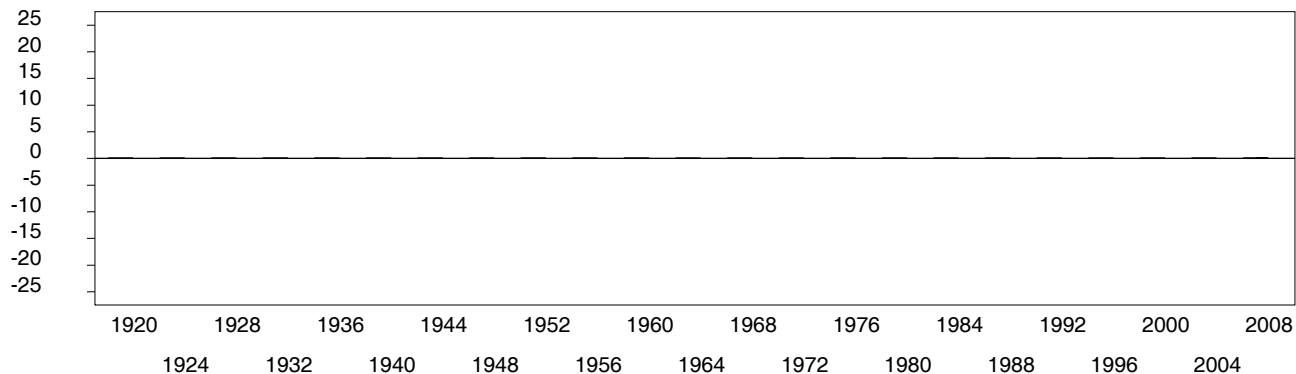


Figure 3. R-DEX: % by which County GOP% is above/below the State GOP%.



1. Statewide Winner in UPPERCASE. Incumbency: * for incumbent, + for party holding seat.
2. BOLDING indicates unit won by REPUBLICANS. Plurality in UPPERCASE indicates unit won with a majority of the vote.
3. Total column may include votes for minor party candidates. An asterisk (*) follows the Total column if it includes votes not listed (see Rem%).
4. % of Marg(in) is Plurality as % of Total Vote. GOP Index (R-Dex) is the percentage (not percentage points) by which GOP% for County is above(+)/below(-) the State GOP%.
5. Order of races is standardized and may not match ballot order. Selected races only; non-competitive lower-ticket races may be omitted.
6. Each race is assigned a specific bar in the graphs. Top of the ticket is darkest bar and is at the left of each year cluster. Races not listed in the history table will result in blank bars.

[50000VHB-psvhcy21-LK16]