

Race	Candidate GOP/Dem/Ind	GOP Vote	Dem Vote	Ind Vote	Total Vote	GOP %	Dem %	Ind %	Rem %	Plurality/Win	%of Marg	GOP Index
2010												
Gov	Dubie+/SHUMLIN	115,212	119,543	0	241,605*	47.7	49.5	0.0	2.8	4,331 d	1.8	0.0
LtG	SCOTT+/Howard	116,198	99,843	0	235,330*	49.4	42.4	0.0	8.2	16,355 r	7.0	0.0
Sec	Gibbs/CONDOS+	101,144	122,599	0	229,280*	44.1	53.5	0.0	2.4	21,455 D	9.4	0.0
Aud	SALMONS/Hoffer+	120,237	105,081	0	231,221*	52.0	45.5	0.0	2.6	15,156 R	6.6	0.0
2008												
Pres	McCain/OBAMA+	98,974	219,262	0	325,046*	30.5	67.5	0.0	2.1	120,288 D	37.0	0.0
Gov	DOUGLAS*/Syming./Pollina	170,492	69,534	69,791	319,085*	53.4	21.8	21.9	2.9	100,701 R	31.6	0.0
LtG	DUBIE*/Costello	171,744	121,953	0	311,792*	55.1	39.1	0.0	5.8	49,791 R	16.0	0.0
2006												
Cong	Rainville/WELCH	117,023	139,815	0	262,726*	44.5	53.2	0.0	2.2	22,792 D	8.7	0.0
Gov	DOUGLAS*/Parker	148,014	108,090	0	262,524*	56.4	41.2	0.0	2.5	39,924 R	15.2	0.0
LtG	DUBIE*/Dunne	133,250	118,411	0	260,430*	51.2	45.5	0.0	3.4	14,839 R	5.7	0.0
Aud	Brock*/SALMON/Abbott	111,668	111,770	23,490	250,950*	44.5	44.5	9.4	1.6	102 d	0.0	0.0
2004												
Pres	Bush/KERRY+	121,180	184,067	0	312,309*	38.8	58.9	0.0	2.3	62,887 D	20.1	0.0
Gov	DOUGLAS*/Clavelle	181,540	117,327	0	309,285*	58.7	37.9	0.0	3.4	64,213 R	20.8	0.0
LtG	DUBIE*/Rivers/Hingtgen	170,270	108,600	21,553	303,924*	56.0	35.7	7.1	1.2	61,670 R	20.3	0.0
Aud	BROCK/Ready*/Levy	152,848	122,498	17,685	293,421*	52.1	41.8	6.0	0.1	30,350 R	10.3	0.0
2002												
Gov	DOUGLAS/Racine+/Hogan	103,436	97,565	22,353	230,161*	44.9	42.4	9.7	3.0	5,871 r	2.6	0.0
LtG	DUBIE/Shumlin+/Pollina	94,044	73,501	56,564	228,535*	41.2	32.2	24.8	1.9	20,543 r	9.0	0.0
Trs	LaBarge+/SPAULDING	80,229	127,459	0	222,798*	36.0	57.2	0.0	6.8	47,230 D	21.2	0.0
Sec	Bertrand/MARKOWITZ*	82,905	131,469	0	223,621*	37.1	58.8	0.0	4.1	48,564 D	21.7	0.0
Aud	Hyde/READY*	93,342	113,240	0	220,655*	42.3	51.3	0.0	6.4	19,898 D	9.0	0.0
2000												
Pres	Bush/GORE+/Nader	119,775	149,022	0	294,308*	40.7	50.6	0.0	8.7	29,247 D	9.9	0.0
Gov	Dwyer/DEAN*/Pollina	111,359	148,059	28,116	293,217*	38.0	50.5	9.6	1.9	36,700 D	12.5	0.0
LtG	Dubie/RACINE*	118,202	152,561	0	285,801*	41.4	53.4	0.0	5.3	34,359 D	12.0	0.0
Sec	Drown/MARKOWITZ*	101,783	170,403	0	277,836*	36.6	61.3	0.0	2.0	68,620 D	24.7	0.0
Aud	Hall/READY+	116,994	149,724	0	277,995*	42.1	53.9	0.0	4.1	32,730 D	11.8	0.0
1998												
Gov	Dwyer/DEAN*	89,726	121,425	0	217,774*	41.2	55.8	0.0	3.0	31,699 D	14.6	0.0
LtG	Snelling, B./RACINE*	104,351	105,480	0	216,775*	48.1	48.7	0.0	3.2	1,129 d	0.5	0.0
Sec	Milne*/MARKOWITZ	94,635	100,152	0	209,259*	45.2	47.9	0.0	6.9	5,517 d	2.6	0.0
Aud	Dwinell/FLANAGAN*	80,249	107,715	0	206,175*	38.9	52.2	0.0	8.8	27,466 D	13.3	0.0
1996												
Pres	Dole/CLINTON*/Perot	80,352	137,894	31,024	258,449*	31.1	53.4	12.0	3.6	57,542 D	22.3	0.0
Cong	Sweetser/Long/SANDERS*	83,021	23,830	140,678	254,706*	32.6	9.4	55.2	2.8	57,657 O	22.6	0.0
Gov	Gropper/DEAN*	57,161	179,544	0	254,648*	22.5	70.5	0.0	7.1	122,383 D	48.1	0.0
LtG	Carroll+/RACINE	102,818	135,567	0	250,736*	41.0	54.1	0.0	4.9	32,749 D	13.1	0.0
Aud	Morrissey/FLANAGAN*	93,154	118,048	0	237,703*	39.2	49.7	0.0	11.2	24,894 d	10.5	0.0
1994												
Sen	JEFFORDS*/Backus/Mills	106,505	85,868	12,465	211,672*	50.3	40.6	5.9	3.2	20,637 R	9.8	0.0
Cong	Carroll/No Dem/SANDERS*	98,523	0	105,502	211,449*	46.6	0.0	49.9	3.5	6,979 o	3.3	0.0
Gov	Kelley/DEAN*/Morse	40,292	145,661	15,000	212,046*	19.0	68.7	7.1	5.2	105,369 D	49.7	0.0
LtG	SNELLING, B.*/Racine	105,992	98,886	0	210,958*	50.2	46.9	0.0	2.9	7,106 R	3.4	0.0
Sec	MILNE/Hooper*	101,135	85,150	0	202,017*	50.1	42.2	0.0	7.8	15,985 R	7.9	0.0
Aud	Thorn/FLANAGAN*	76,245	103,100	0	198,036*	38.5	52.1	0.0	9.4	26,855 D	13.6	0.0
1992												
Pres	Bush*/CLINTON/Perot	88,122	133,592	65,991	289,701*	30.4	46.1	22.8	0.7	45,470 d	15.7	0.0
Sen	Douglas/LEAHY*	123,854	154,762	0	278,616	44.5	55.6	0.0	0.0	30,908 D	11.1	0.0
Gov	McClaghry/DEAN*	65,837	213,523	0	279,360	23.6	76.4	0.0	0.0	147,686 D	52.9	0.0
LtG	SNELLING, B./Wolk+	147,479	121,020	0	268,499	54.9	45.1	0.0	0.0	26,459 R	9.9	0.0
Trs	Smith, M./RUSE*	113,525	134,315	0	247,840	45.8	54.2	0.0	0.0	20,790 D	8.4	0.0
Sec	Milne+/HOOPER/Herbert	116,529	127,649	21,161	265,339	43.9	48.1	8.0	0.0	11,120 d	4.2	0.0
Aud	Crisman+/FLANAGAN/Davenport	107,342	134,752	17,027	259,121	41.4	52.0	6.6	0.0	27,410 D	10.6	0.0

POLIDATA © Demographic and Political Guides. All Rights Reserved. Copyright © 2011. www.polidata.us

1. Statewide Winner in UPPERCASE. Incumbency: * for incumbent, + for party holding seat.

2. BOLDING indicates unit won by REPUBLICANS. Plurality in UPPERCASE indicates unit won with a majority of the vote.

3. Total column may include votes for minor party candidates. An asterisk (*) follows the Total column if it includes votes not listed (see Rem%).

4. % of Marg(in) is Plurality as % of Total Vote. GOP Index (R-Dex) is the percentage (not percentage points) by which GOP% for County is above(+)/below(-) the State GOP%.

5. Order of races is standardized and may not match ballot order. Selected races only; non-competitive lower-ticket races may be omitted.

6. Each race is assigned a specific bar in the graphs. Top of the ticket is darkest bar and is at the left of each year cluster. Races not listed in the history table will result in blank bars.

Figure 1. TOTAL VOTES.

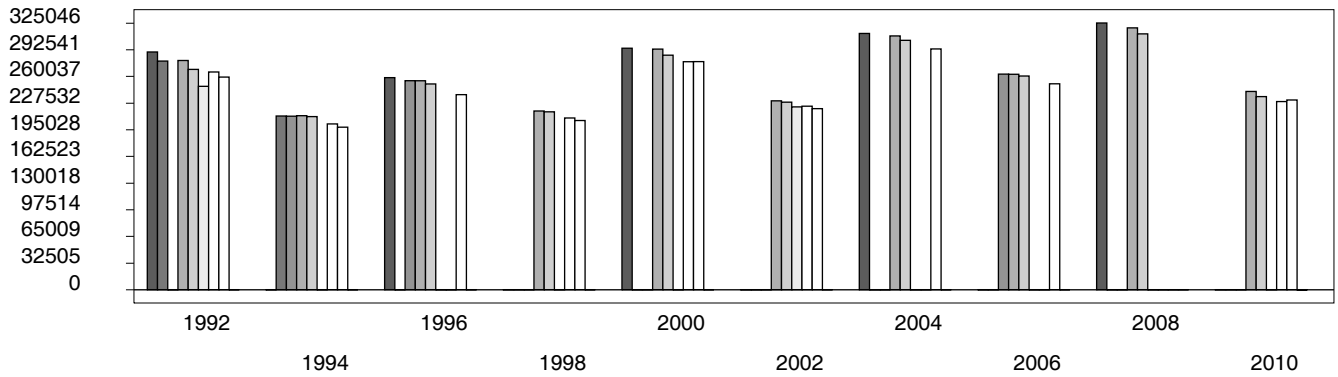


Figure 2. REPUBLICAN %. Refer to GOP-DEX for comparative value.

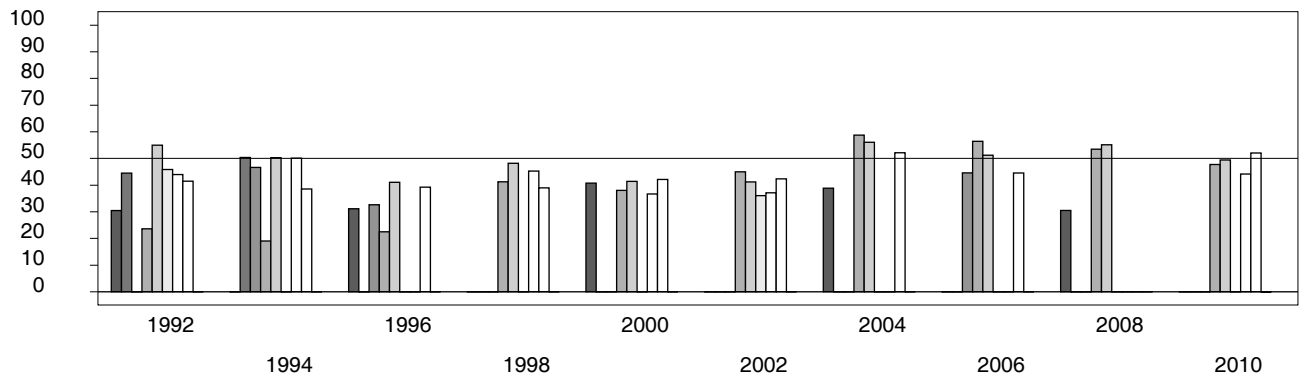
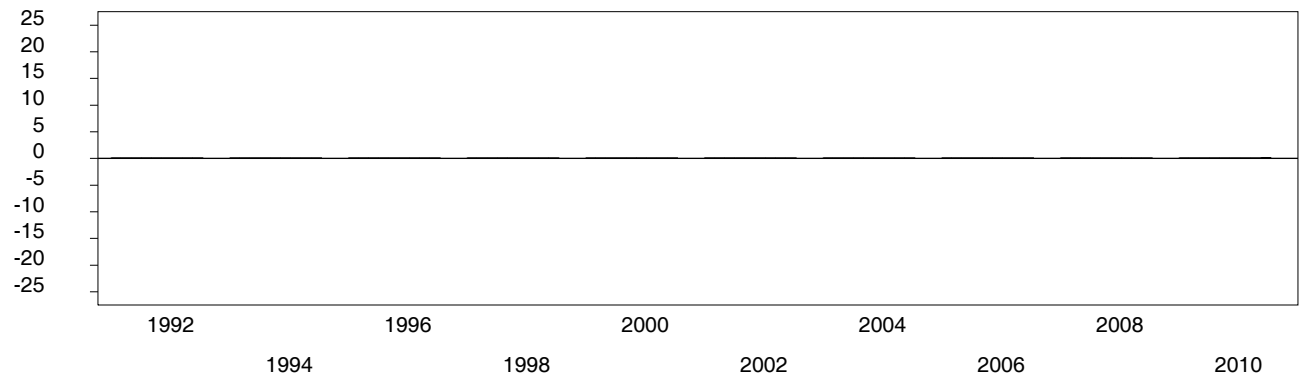


Figure 3. R-DEX: % by which County GOP% is above/below the State GOP%.



1. Statewide Winner in UPPERCASE. Incumbency: * for incumbent, + for party holding seat.

2. BOLDING indicates unit won by REPUBLICANS. Plurality in UPPERCASE indicates unit won with a majority of the vote.

3. Total column may include votes for minor party candidates. An asterisk (*) follows the Total column if it includes votes not listed (see Rem%).

4. % of Marg(in) is Plurality as % of Total Vote. GOP Index (R-Dex) is the percentage (not percentage points) by which GOP% for County is above(+)/below(-) the State GOP%.

5. Order of races is standardized and may not match ballot order. Selected races only; non-competitive lower-ticket races may be omitted.

6. Each race is assigned a specific bar in the graphs. Top of the ticket is darkest bar and is at the left of each year cluster. Races not listed in the history table will result in blank bars.