

Race	Candidate GOP/Dem/Ind	GOP Vote	Dem Vote	Ind Vote	Total Vote	GOP %	Dem %	Ind %	Rem %	Plurality/Win	%of Marg	GOP Index
<b>2000</b>												
Pres	Bush/GORE+	137,288	180,068	0	327,529*	41.9	55.0	0.0	3.1	42,780 D	13.1	0.0
<b>1996</b>												
Pres	Dole/CLINTON*/Perot	99,062	140,355	28,719	270,810*	36.6	51.8	10.6	1.0	41,293 D	15.3	0.0
<b>1992</b>												
Pres	Bush*/CLINTON/Perot	102,313	126,054	59,213	289,620*	35.3	43.5	20.5	0.7	23,741 d	8.2	0.0
<b>1988</b>												
Pres	BUSH+/Dukakis	139,639	108,647	0	249,891*	55.9	43.5	0.0	0.6	30,992 R	12.4	0.0
<b>1984</b>												
Pres	REAGAN*/Mondale	152,190	101,656	0	254,572*	59.8	39.9	0.0	0.3	50,534 R	19.9	0.0
<b>1980</b>												
Pres	REAGAN/Carter*/Anderson	111,252	105,754	16,288	235,900*	47.2	44.8	6.9	1.1	5,498 r	2.3	0.0
<b>1976</b>												
Pres	Ford+/CARTER	109,831	122,596	0	235,834*	46.6	52.0	0.0	1.4	12,765 D	5.4	0.0
<b>1972</b>												
Pres	NIXON*/McGovern	140,357	92,283	0	235,516*	59.6	39.2	0.0	1.2	48,074 R	20.4	0.0
<b>1968</b>												
Pres	NIXON/Humphrey+/Wallace	96,714	89,194	28,459	214,367	45.1	41.6	13.3	0.0	7,520 r	3.5	0.0
<b>1964</b>												
Pres	Goldwater/JOHNSON+	78,078	122,704	0	201,320*	38.8	61.0	0.0	0.3	44,626 D	22.2	0.0
<b>1960</b>												
Pres	Nixon+/KENNEDY	96,373	99,590	0	196,683*	49.0	50.6	0.0	0.4	3,217 D	1.6	0.0
<b>1956</b>												
Pres	EISENHOWER*/Stevenson	98,057	79,421	0	177,988*	55.1	44.6	0.0	0.3	18,636 R	10.5	0.0
<b>1952</b>												
Pres	EISENHOWER+/Stevenson	90,059	83,315	0	174,025*	51.8	47.9	0.0	0.4	6,744 R	3.9	0.0
<b>1948</b>												
Pres	DEWEY/Truman+	69,588	67,813	0	139,073*	50.0	48.8	0.0	1.2	1,775 R	1.3	0.0
<b>1944</b>												
Pres	Dewey/ROOSEVELT*	56,747	68,166	0	125,361*	45.3	54.4	0.0	0.4	11,419 D	9.1	0.0
<b>1940</b>												
Pres	Willkie/ROOSEVELT*	61,440	74,599	0	136,374*	45.1	54.7	0.0	0.3	13,159 D	9.7	0.0
<b>1936</b>												
Pres	Landon+/ROOSEVELT	57,236	69,702	0	127,603*	44.9	54.6	0.0	0.5	12,466 D	9.8	0.0
<b>1932</b>												
Pres	HOOVER*/Roosevelt	57,073	54,319	0	112,901*	50.6	48.1	0.0	1.3	2,754 R	2.4	0.0
<b>1928</b>												
Pres	HOOVER+/Smith	68,860	35,354	0	104,602*	65.8	33.8	0.0	0.4	33,506 R	32.0	0.0
<b>1924</b>												
Pres	COOLIDGE+/Davis/LaFollet	52,441	33,445	4,999	90,885	57.7	36.8	5.5	0.0	18,996 R	20.9	0.0
<b>1920</b>												
Pres	HARDING+/Cox	52,858	39,911	0	94,875*	55.7	42.1	0.0	2.2	12,947 R	13.6	0.0

POLIDATA © Demographic and Political Guides. All Rights Reserved. Copyright © 2003. www.polidata.us

1. Statewide Winner in UPPERCASE. Incumbency: \* for incumbent, + for party holding seat.

2. BOLDING indicates unit won by REPUBLICANS. Plurality in UPPERCASE indicates unit won with a majority of the vote.

3. Total column may include votes for minor party candidates. An asterisk (\*) follows the Total column if it includes votes not listed (see Rem%).

4. % of Marg(in) is Plurality as % of Total Vote. GOP Index (R-Dex) is the percentage (not percentage points) by which GOP% for County is above(+)/below(-) the State GOP%.

5. Order of races is standardized and may not match ballot order. Selected races only; non-competitive lower-ticket races may be omitted.

6. Each race is assigned a specific bar in the graphs. Top of the ticket is darkest bar and is at the left of each year cluster. Races not listed in the history table will result in blank bars.

Figure 1. TOTAL VOTES.

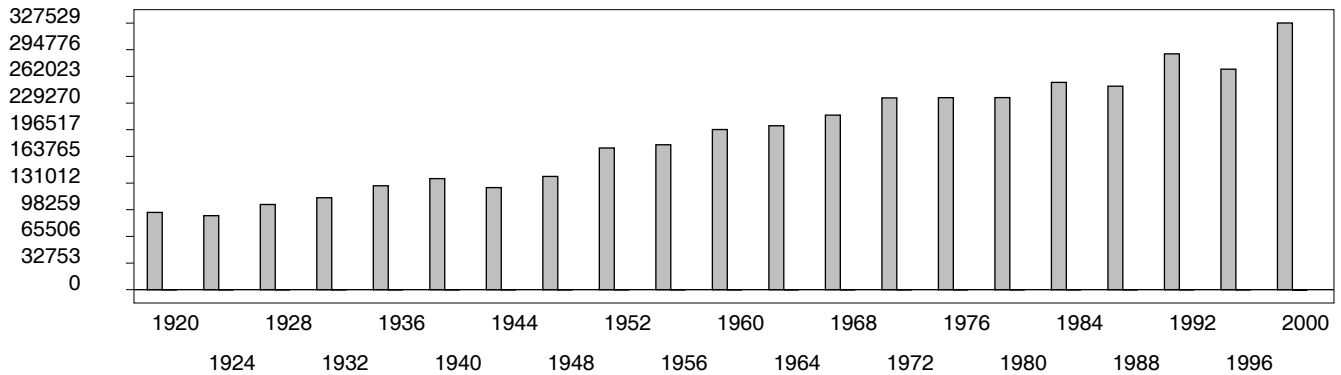


Figure 2. REPUBLICAN %. Refer to GOP-DEX for comparative value.

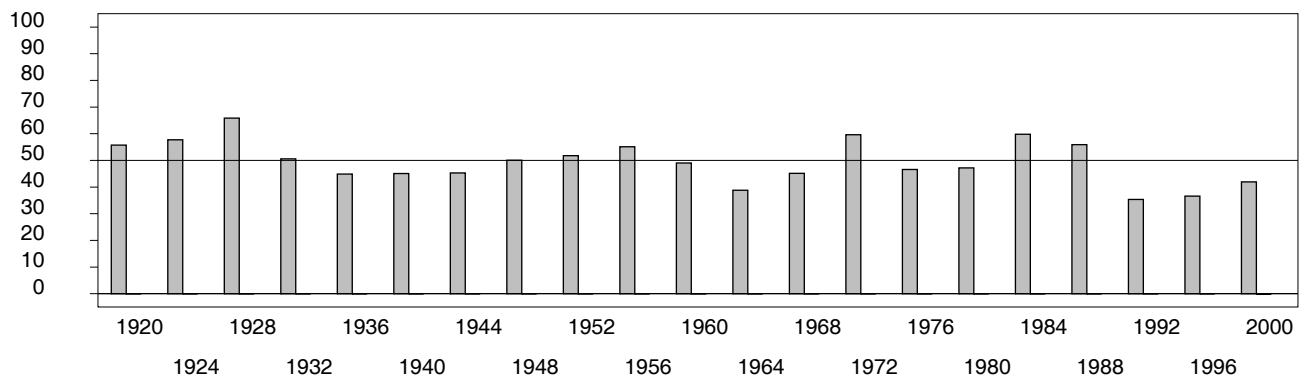


Figure 3. R-DEX: % by which County GOP% is above/below the State GOP%.



1. Statewide Winner in UPPERCASE. Incumbency: \* for incumbent, + for party holding seat.
2. BOLDING indicates unit won by REPUBLICANS. Plurality in UPPERCASE indicates unit won with a majority of the vote.
3. Total column may include votes for minor party candidates. An asterisk (\*) follows the Total column if it includes votes not listed (see Rem%).
4. % of Marg(in) is Plurality as % of Total Vote. GOP Index (R-Dex) is the percentage (not percentage points) by which GOP% for County is above(+)/below(-) the State GOP%.
5. Order of races is standardized and may not match ballot order. Selected races only; non-competitive lower-ticket races may be omitted.
6. Each race is assigned a specific bar in the graphs. Top of the ticket is darkest bar and is at the left of each year cluster. Races not listed in the history table will result in blank bars.

[10000VHB-psvhy21-DD12]